



ISOLI











PT 180 | PT 200

Truck-mounted aerial lift work platform

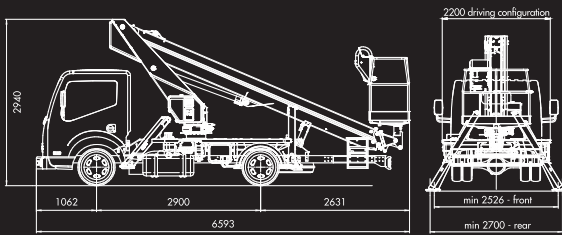


Specifications :

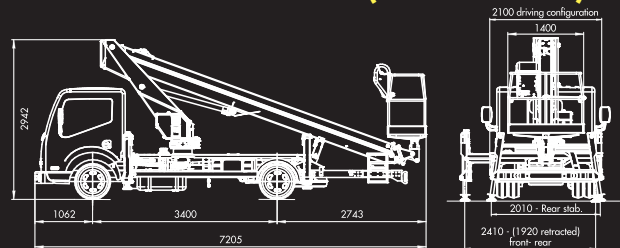
* Depending on truck

	PT 180	PT 200		PT 180	PT 200
	250 kg	250 kg		+ / - 90°	+ / - 90°
	12 m*	12 m*		H + H / A + A *	HE + H / HH *
	18 m	20 m		Hydraulic	Hydraulic
	16 m	18 m		Alluminium	Alluminium
	1400 x 710 x 1100 mm	1400 x 710 x 1100 mm		400°	400°

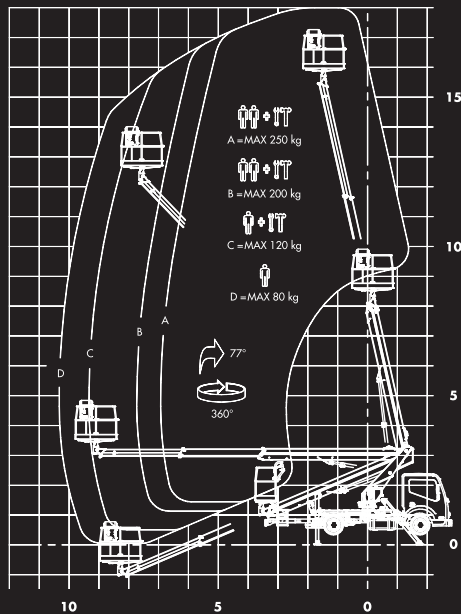
PT 180 Overall dimensions (millimeters)



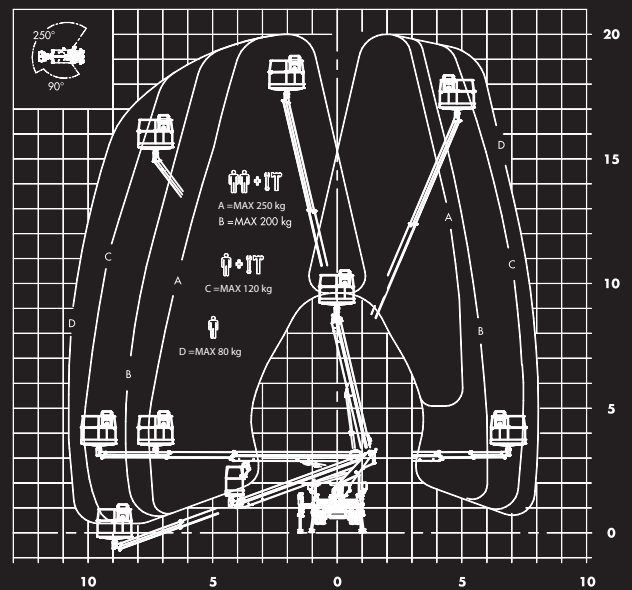
PT 200 Overall dimensions (millimeters)



Working diagram (meters)



Working diagram (meters)



Multico (M) Sdn Bhd (Co. No. 020750-P)
 No.2, Jalan P/9B, Seksyen 13,
 Kawasan Perindustrian Bangi,
 43650 Bandar Baru Bangi,
 Selangor Darul Ehsan, Malaysia.
 Tel : (603) 8913 6666
 Fax : (603) 8913 6677
 Email : info@mcm.multicoasia.com
 Website: www.multico.com.my

Johor Bahru Branch
 No. 8, Jalan Mutiara Emas 5/3,
 Taman Mount Austin Industrial Estate,
 81100 Johor Bahru,
 Johor Darul Takzim, Malaysia.
 Tel : (607) 364 5675
 Fax : (607) 364 5675

Kota Kinabalu Branch
 Taman Industri Warisan Indah, Lot No. SD22,
 DBKK 08, Lorong Industri Warisan 2, Mile 7
 88450 Inanam, Kota Kinabalu,
 Sabah, Malaysia
 Tel : (088) 393 470
 Fax : (088) 393 469