



Lifting your dreams

AERIAL WORK PLATFORM

AT-255CG



Maximum working height
27.5 m

Maximum bucket bottom height
25.5 m

Maximum working radius
13.5 m

Maximum bucket loading capacity
200 kg or 2 persons



MODEL: AT-255CG

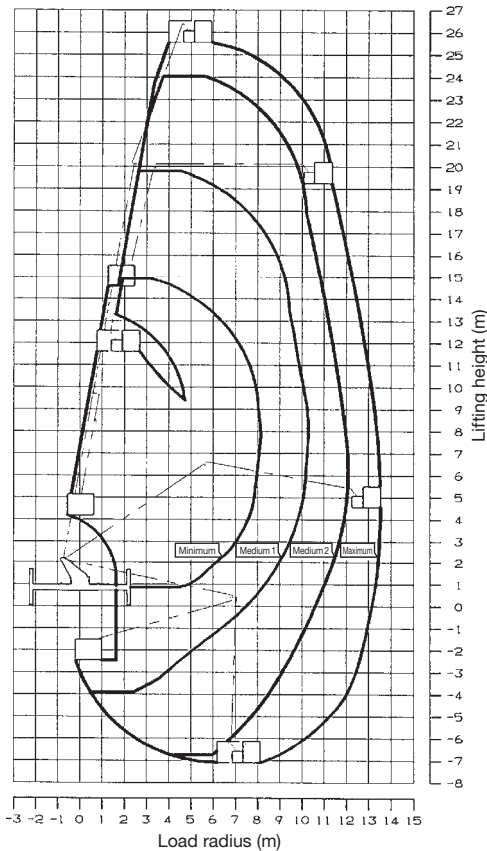
SPECIFICATIONS

MAX. BUCKET BOTTOM HEIGHT	25.5 m
BUCKET EQUIPMENT	
Bucket	F.R.P. (Fiber-reinforced plastics) made.
Inside dimensions	0.65 m x 1.15 m x 1.0 m (L x W x H)
Capacity	200 kg or two(2) persons
Automatic leveling system	By hydraulic cylinders with link.
Bucket slewing system	Electric motor driven through reduction gear.
Slewing angle	186° (Left 93°, Right 93°)
BOOM	
	3-section full power synchronized telescoping boom of box construction. The synchronization system consists of a double-acting hydraulic cylinder, an extension cable and a retraction cable. Hydraulic cylinder fitted with a holding valve and a pilot check valve.
Fully retracted length	7.70 m + 4.70 m (Articulating boom)
Fully extended length	18.26 m + 6.65 m (Articulating boom)
Extension speed	10.56 m in 52 s
	1.95 m in 20 s (Articulating boom)
Articulating speed	0° to 170° in 65 s
ELEVATION	
	By a double-acting hydraulic cylinder, fitted with a holding valve.
Elevation speed	-12° to 80° in 50 s
SLEWING	
	Hydraulic motor driven through worm reduction gear. 360° continuous in either direction on ball bearing slew ring.
Slewing speed	1.0 min ⁻¹ {rpm}
HYDRAULIC SYSTEM	
Pumps	Gear pump and piston pump
Control valves	Multiple hydraulic-control valves actuated by switch with integral relief valves, on slewing frame. And electric remote control from bucket.
Hydraulic oil tank capacity	Approx. 110 L
Filter	Return line filter

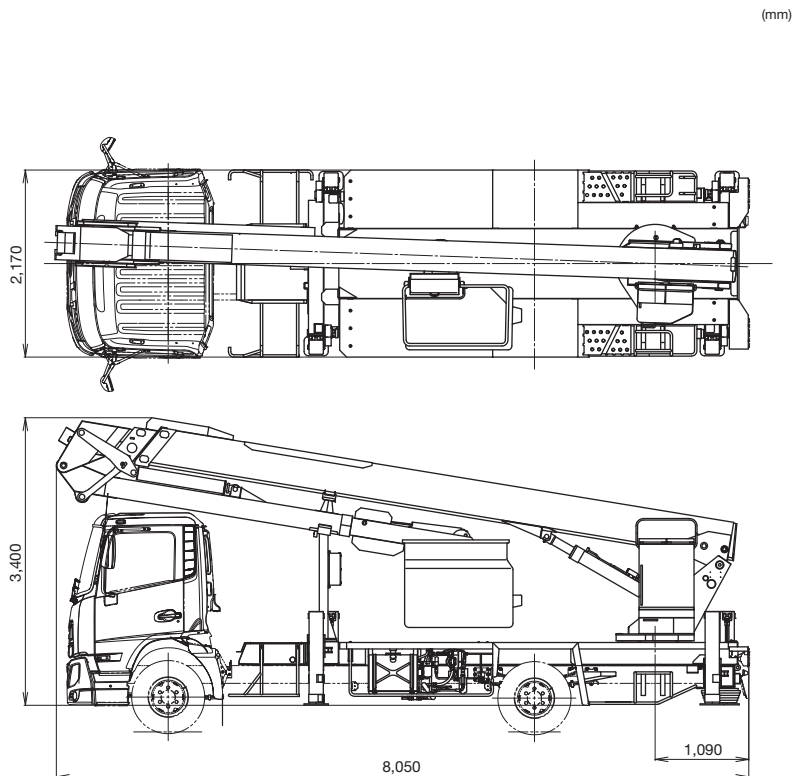
OUTRIGGERS	4 hydraulically operated outriggers. Each outrigger controlled simultaneously or independently from rear side of carrier. Equipped with sight level gauge. Floats mounted integrally with the jacks and retract to within vehicle width. All cylinders fitted with pilot check valves.
Fully extended width	4.4 m
SAFETY DEVICES	<ul style="list-style-type: none"> • Automatic working area limiter (AMC) • Boom profile monitor system (Prevent hitting vehicle by boom and by bucket, prevent hitting bucket by articulating boom) • Automatic speed control system on boom elevation, slewing and articulating. • Automatic speed reduction and slow stop function on boom elevation, slewing, telescoping and articulating. • Automatic acceleration • Boom vertical/horizontal movement device • Boom and bucket automatic stowing • Emergency pump • Emergency stop system • Parking brake warning • PTO connect warning (when drive) • Jack interlock • Boom interlock • Outrigger indicator • Shift lever interlock • Hydraulic cylinder lock valves • Hydraulic safety valves • Level gauge • Guard for operation levers • Foot switch (on bucket)
ACCESSORIES	<ul style="list-style-type: none"> • Hour meter • Rubber blocks (for outriggers) • Chocks
OPTIONAL EQUIPMENT	<ul style="list-style-type: none"> • Work light (on bucket) • Safety belt • Elevation cylinder boots • Beacon light (on outrigger jacks) • Wood blocks (for outrigger) • Grease pump • Tools

WORKING RANGE

Bucket loading capacity:
200 kg or 2 persons



DIMENSIONS (Approx.)



NOTE: Some specifications are subject to change.



TADANO LTD. (International Sales Division)
4-12, Kamezawa 2-chome, Sumida-ku Tokyo 130-0014, Japan
Phone: +81-3-3621-7750 Fax: +81-3-3621-7785
<http://www.tadano.com/> E-mail: info@tadano.com

