



Lifting your dreams

AERIAL WORK PLATFORM

AT-220TG

Maximum working height
24.4 m

Maximum bucket bottom height
22.4 m

Maximum working radius
Approx. 15.2 m + 1 m

Maximum bucket loading capacity
200 kg or two (2) persons



MODEL: AT-220TG

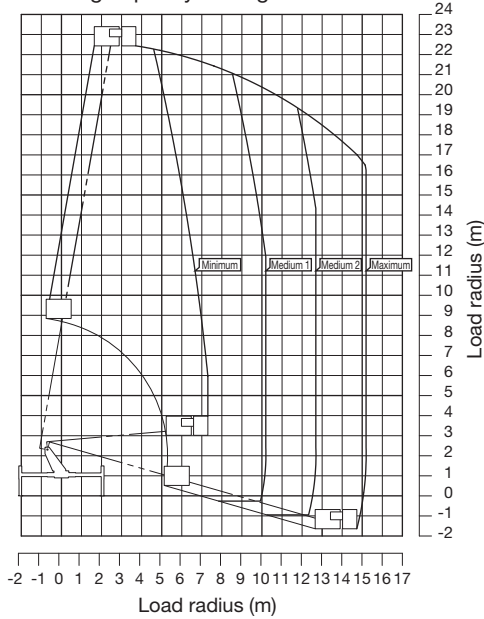
SPECIFICATIONS

| | |
|-----------------------------|---|
| MAX. BUCKET BOTTOM HEIGHT | 22.4 m |
| BUCKET EQUIPMENT | |
| Bucket | F.R.P. (Fiber-reinforced plastics) made |
| Inside dimensions | 0.7 m x 1.2 m x 0.9 m (L x W x D) |
| Capacity | 200 kg or two (2) persons |
| Automatic leveling system | By hydraulic cylinders. |
| Slewing angle | 200° (Left 97°, Right 103°) |
| BOOM | 4-section full power synchronized telescoping boom of box construction. The synchronization system consists of a double-acting hydraulic cylinder, an extension cable and a retraction cable. Hydraulic cylinder fitted with a holding valve and a pilot check valve. |
| Fully retracted length | 6.85 m |
| Fully extended length | 20.65 m |
| Extension speed | 13.8 m in 50 s |
| ELEVATION | By a double-acting hydraulic cylinder, fitted with a holding valve. |
| Elevation speed | -16° to 80° in 50 s |
| SLEWING | Hydraulic motor driven through worm reduction gear. 360° continuous in either direction on ball bearing slewing ring. |
| Slewing speed | 1.0 min ⁻¹ {rpm} |
| HYDRAULIC SYSTEM | |
| Pumps | Gear pump. |
| Control valves | Multiple remote-control valves actuated by electric remote control from slewing frame and bucket. |
| Hydraulic oil tank capacity | Approx. 63 L |
| Filter | Return line filter |

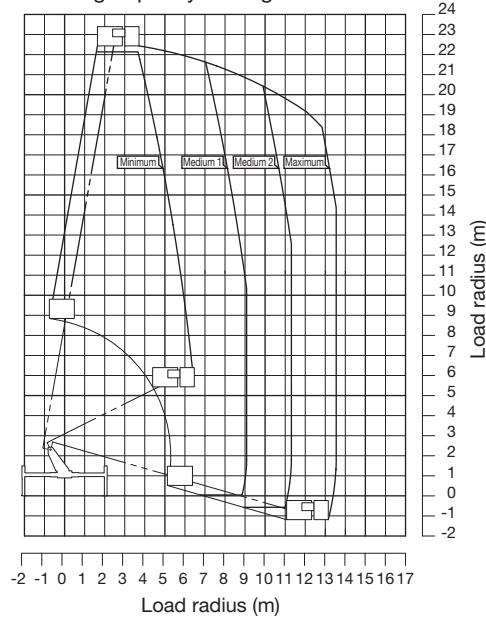
| | |
|----------------------|---|
| OUTRIGGERS | 4 hydraulically operated outriggers. Each outrigger controlled simultaneously or independently from rear side of carrier. Equipped with sight level gauge. Floats mounted integrally with the jacks and retract to within vehicle width. All cylinders fitted with pilot check valves. |
| Fully extended width | 4.1 m |
| SAFETY DEVICES | <ul style="list-style-type: none"> • Automatic moment limiter (AMC) • Boom profile monitor system (Prevent hitting vehicle by boom and by bucket) • Automatic speed control system on boom elevation and slewing • Automatic speed reduction and slow stop function on boom elevation, slewing and telescoping • Automatic acceleration • Boom vertical/horizontal movement device • Boom and bucket automatic stowing • Emergency pump • Emergency stop system • Parking brake warning • PTO connect warning (when drive) • Jack interlock • Boom interlock • Outrigger indicator • Hydraulic cylinder lock valves • Hydraulic safety valves • Level gauge • Guard for operation levers • Foot switch (on bucket) |
| ACCESSORIES | <ul style="list-style-type: none"> • Hour meter • Rubber blocks (for outriggers) • Chocks |
| OPTIONAL EQUIPMENT | <ul style="list-style-type: none"> • Work light (on bucket) • Safety belt • Elevation cylinder boot • Beacon light (on outrigger jacks) • Wood block (for outriggers) • Grease pump • Tools |

WORKING RANGE

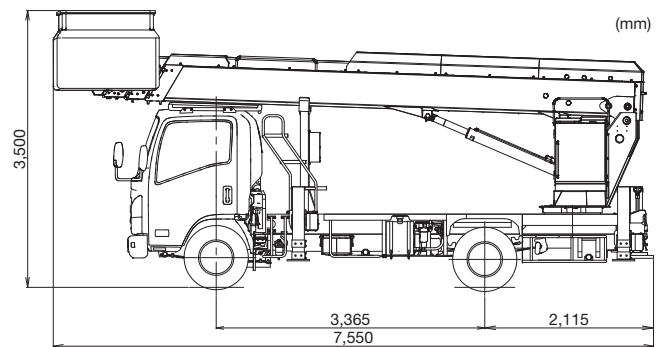
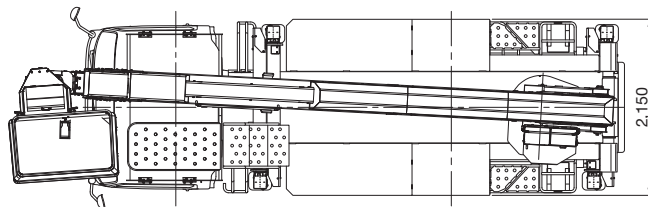
Loading capacity 100 kg



Loading capacity 200 kg



DIMENSIONS (Approx.)



NOTE: Some specifications are subject to change.



TADANO LTD. (International Sales Division)
 4-12, Kamezawa 2-chome, Sumida-ku Tokyo 130-0014, Japan
 Phone: +81-3-3621-7750 Fax: +81-3-3621-7785
<http://www.tadano.com/> E-mail: info@tadano.com

