

AT-195CG



Maximum working height
21.6 m

Maximum basket bottom height
19.6 m

Maximum working radius
11.1 m

Maximum basket loading capacity
200 kg or two (2) persons

MODEL: AT-195CG

SPECIFICATIONS

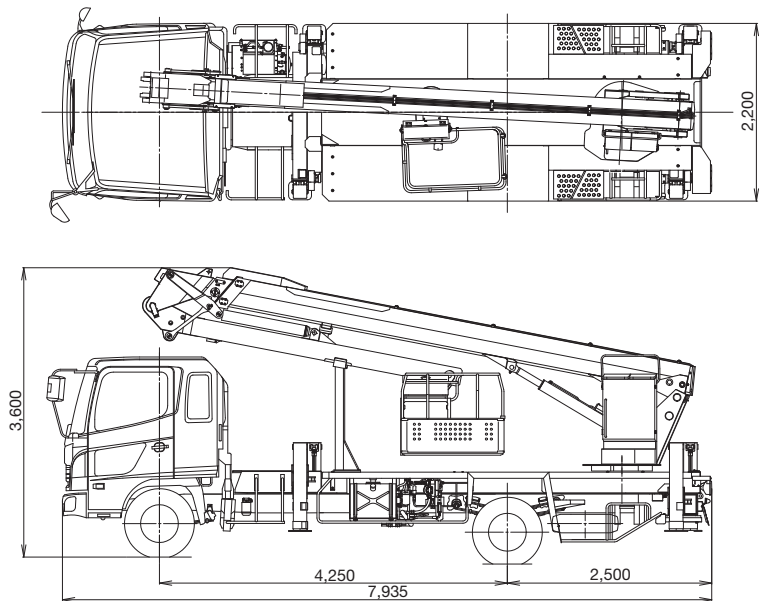
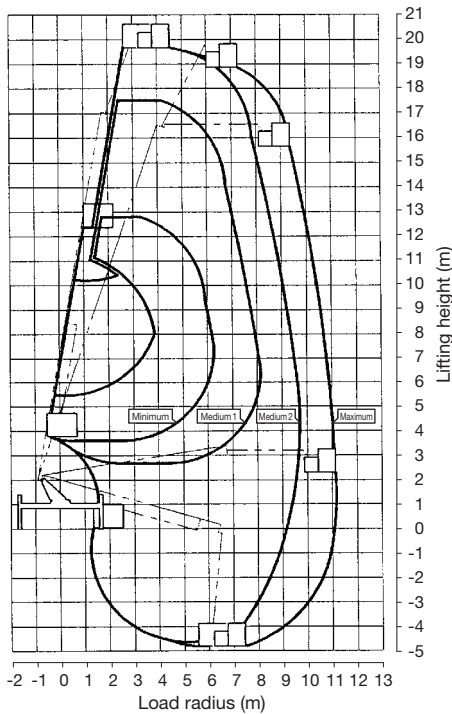
| | |
|-----------------------------|--|
| MAX. BASKET BOTTOM HEIGHT | 19.6 m |
| BASKET EQUIPMENT | |
| Basket | Pipe made |
| Inside dimensions | 0.7 m x 1.2 m x 0.95 m (L x W x D) |
| Capacity | 200 kg or two (2) persons |
| Automatic leveling system | By hydraulic cylinders with link. |
| Slewing angle | 190° (Left 95°, Right 95°) |
| BOOM | 3-section full power synchronized telescoping boom of box construction. The synchronization system consists of a double-acting hydraulic cylinder, an extension cable and a retraction cable. Hydraulic cylinder fitted with a holding valve and a pilot check valve. And articulating boom of box construction. The articulation system consists of a double-acting cylinder with holding valves and links. |
| Fully retracted length | 6.55 m + 3.75 m (Articulating) |
| Fully extended length | 15.27 m + 3.75 m (Articulating) |
| Extension speed | 8.72 m in 48 s |
| Articulating speed | 0° to 170° in 30 s |
| ELEVATION | By a double-acting hydraulic cylinder, fitted with a holding valve. |
| Elevation speed | -16° to 80° in 35 s |
| SLEWING | Hydraulic motor driven through worm reduction gear. 360° continuous in either direction on ball bearing slew ring. |
| Slewing speed | 1.0 min ⁻¹ {rpm} |
| HYDRAULIC SYSTEM | |
| Pumps | Gear pump |
| Control valves | Multiple hydraulic-control valves actuated by switch with integral relief valves, on slewing frame. And electric remote control from basket. |
| Hydraulic oil tank capacity | Approx. 110 L |
| Filter | Return line filter |

| | |
|----------------------|--|
| OUTRIGGERS | 4 hydraulically operated outriggers. Each outrigger controlled simultaneously or independently from rear side of carrier. Equipped with sight level gauge. Floats mounted integrally with the jacks and retract to within vehicle width. All cylinders fitted with pilot check valves. |
| Fully extended width | 4.4 m |
| SAFETY DEVICES | <ul style="list-style-type: none"> • Automatic working area limiter (AMC) • Boom profile monitor system (Prevent hitting vehicle by boom and by basket, prevent hitting basket by articulating boom) • Automatic speed control system on boom elevation, slewing and articulating • Automatic speed reduction and slow stop function on boom elevation, slewing, telescoping and articulating • Automatic acceleration • Boom vertical/horizontal movement device • Boom and basket automatic stowing • Emergency pump • Emergency stop system • Parking brake warning • PTO connect warning (when drive) • Jack interlock • Boom interlock • Outrigger indicator • Hydraulic cylinder lock valves • Hydraulic safety valves • Level gauge • Guard for operation levers • Foot switch (on basket) |
| ACCESSORIES | <ul style="list-style-type: none"> • Hour meter • Rubber blocks (for outriggers) • Chocks |
| OPTIONAL EQUIPMENT | <ul style="list-style-type: none"> • Work light (on basket) • Safety belt • Elevation cylinder boots • Beacon light (on outrigger jacks) • Wood block (for outrigger) • Grease pump • Tools |

WORKING RANGE

DIMENSIONS

(mm)



NOTE: Some specifications are subject to change.



TADANO LTD. (International Sales Division)
 4-12, Kamezawa 2-chome, Sumida-ku Tokyo 130-0014, Japan
 Phone: +81-3-3621-7750 Fax: +81-3-3621-7785
<http://www.tadano.com/> E-mail: info@tadano.com

