

# HIAB 10500XG

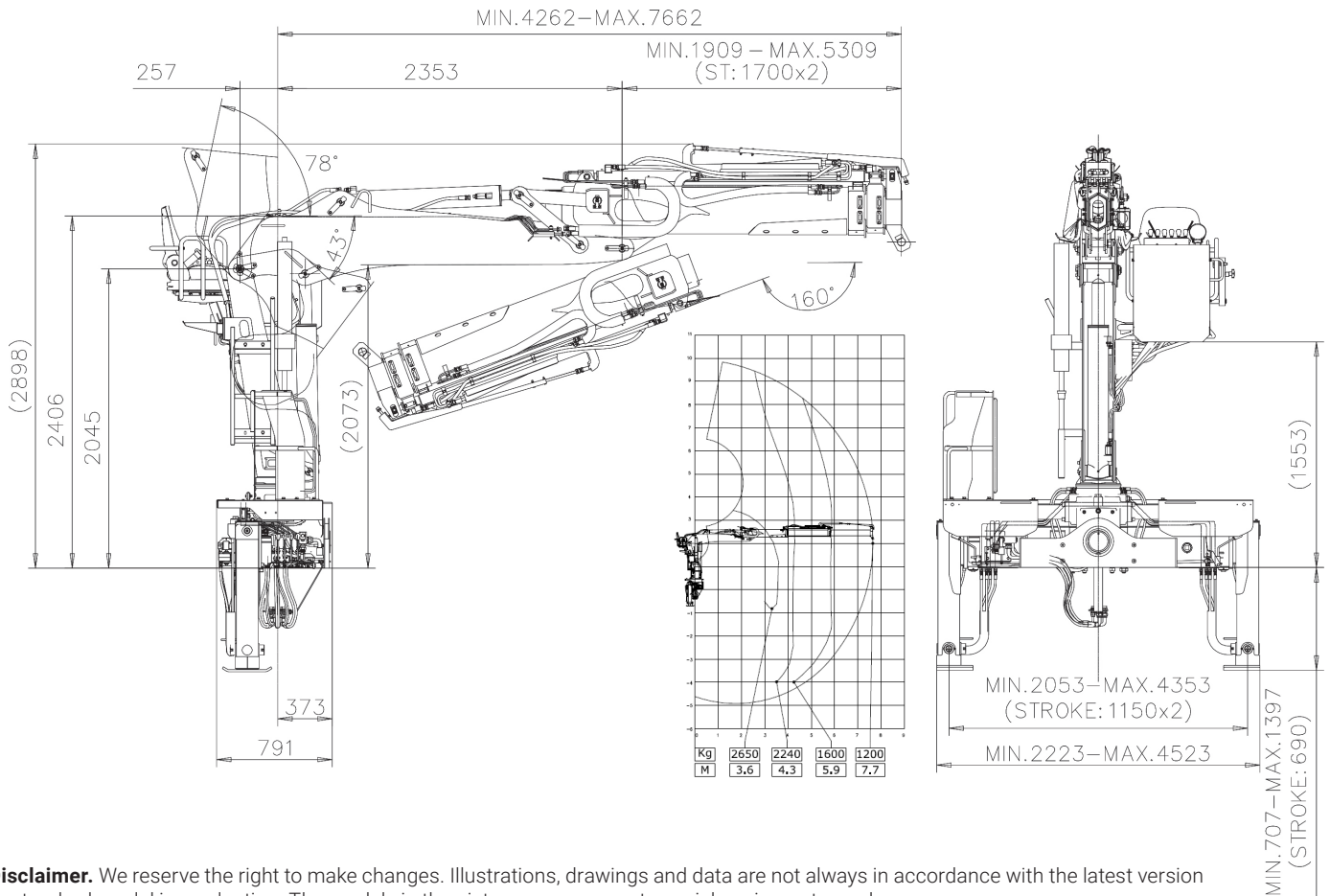


TECHNICAL INFORMATION



Description	Unit	Specification
Crane capacity	tm	9.7
Max. outreach, hydraulic extension	m	7.7
Outreach / Lifting capacity	m / kg	3.6 m - 2650 kg
		4.3 m - 2240 kg
		5.9 m - 1600 kg
		7.7 m - 1200 kg
Type of boom		In line type
Boom lifting speed / angle	sec./ degree	8 / 43~78
Boom extension system / length	/m	2 hydraulic extension / 3.4
Slewing torque / angle	kNm / degree	24.5 / 400
Type of rack & pinion for slewing system		Double
Max. operation pressure	bar	260
Recommended oil flow	liter / min.	50
Slewing speed	degree / sec.	30
Type of control		Top seat
Type of stabilizer leg		Rectangular tube protected
Stabilizer span	m	4.6
Oil tank capacity	liter	170
Height/Width	m	2.90 / 2.23
Weight "standard" crane without stabilizer	kg	1970, Approx.
Weight "stabilizer / top seat"	kg	340 / 130, Approx.
Recommended "truck / scrap grapple" capacity	ton(payload)/ liter	More than 5/ 340(Model SG350)
<b>Non CE Version</b>		

\* The crane weight doesn't include the accessories weight.



**Disclaimer.** We reserve the right to make changes. Illustrations, drawings and data are not always in accordance with the latest version or standard model in production. The models in the pictures may present special equipment or colours.

Cargotec Korea Ltd. is Hiab's subsidiary in Korea.

Cargotec Korea Ltd [www.hiab.co.kr](http://www.hiab.co.kr)

64, Hwangtalli-gil, Gangnae-myeon, Heungdeok-gu, Cheongju-si, Chungcheongbuk-do, 28174, Rep. of KOREA Tel : +82-(0)43-231-6300 Fax : +82-(0)43-231-6200

