

HIAB 12000XG

Capacity 11.6 tm



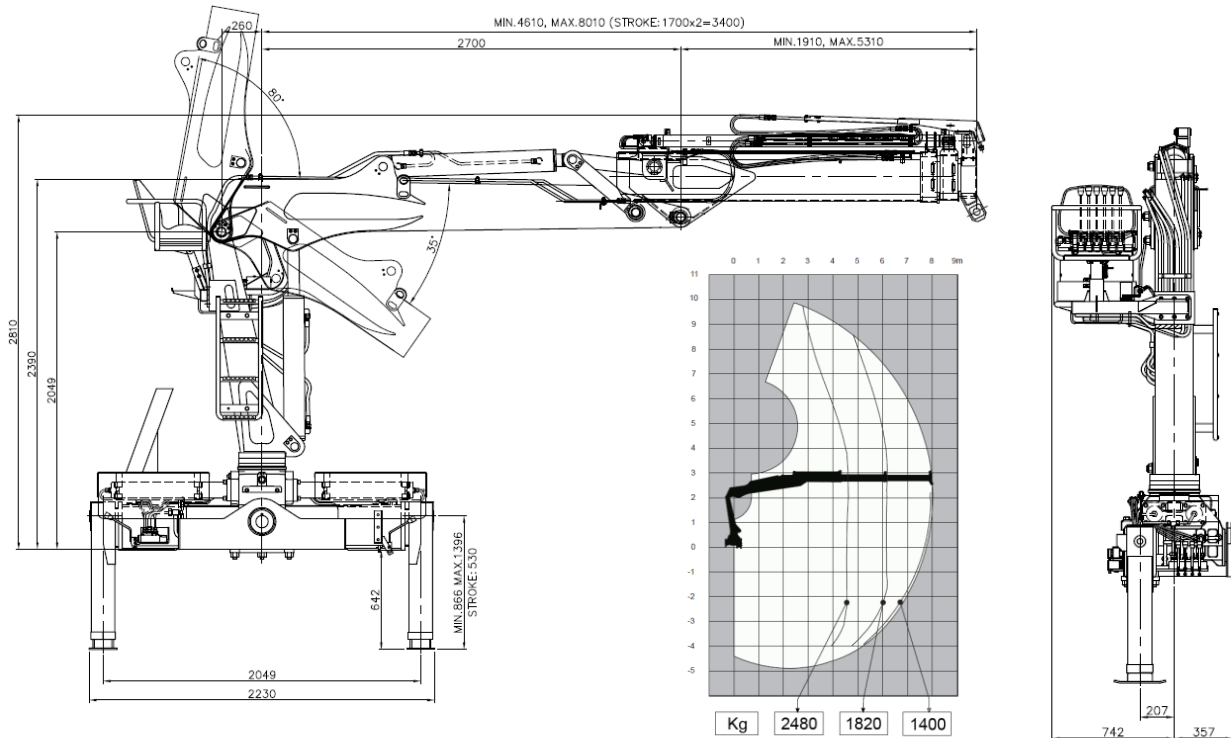
TECHNICAL DATA



HIAB 12000XG

Description	Unit	Specification
Crane capacity	tm	11.6
Max. outreach, hydraulic extension	m	8.0
Outreach / Lifting capacity	m / kg	3.7 / 3100
		4.6 / 2520
		6.2 / 1840
		7.9 / 1400
Type of boom		In line type
Boom lifting speed / angle	sec./ degree	8 /- 35~80
Boom extension system / length	/ m	2 hydraulic extension / 3.4
Slewing torque / angle	kNm / degree	25 / 400
Type of rack & pinion for slewing system		Double
Max. operation pressure	bar	260
Recommended oil flow	liter / min.	50
Slewing speed	degree / sec.	30
Type of control		Top seat
Type of stabilizer leg		Rectangular tube protected
Stabilizer span	m	4.6
Oil tank capacity	liter	170
Height / Width	m	2.81 / 2.23
Weight "standard" crane without stabilizer	kg	1780, Approx.
Weight "stabilizer / top seat"	kg	340 / 130, Approx.
Recommended "truck / scrap grapple" capacity	ton(payload)/ liter	More than 5/ 400(Model SG400)
Non CE Version		

* The crane weight doesn't include the accessories weight.



MARCH 2017 RECYCLING CRANE

Cargotec Korea Ltd www.hiab.co.kr

64 Hwangtanri-Gil, Gangnae-Myun, Heungdeok-Gu,
Cheongju-Si, Chungbuk, 28174 South Korea

Tel : +82-(0)43-231-6300 Fax : +82-(0)43-231-6200